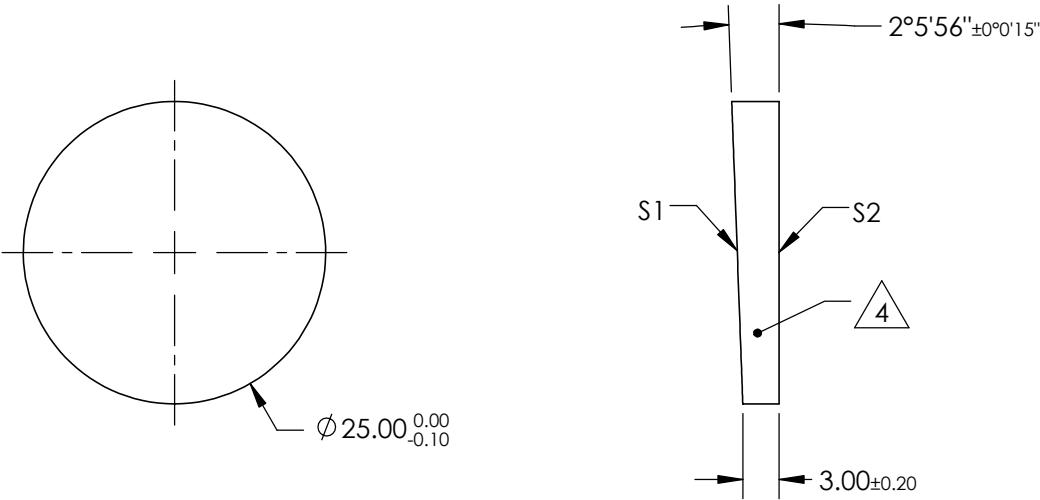


NOTES:

- 1. SUBSTRATE MATERIAL: FUSED SILICA
- 2. ONLY ROHS-COMPLIANT MATERIALS ARE ACCEPTABLE.  
DO NOT SUBSTITUTE WITH ROHS EXEMPT OR NON-COMPLIANT MATERIALS
- 3. COATING (APPLY ACROSS CLEAR APERTURE)  
S1 & S2 : UNCOATED

4. FINE GRIND SURFACE

- 5. POWER, IRREGULARITY, AND SURFACE QUALITY SPECIFICATIONS APPLY ACROSS CLEAR APERTURE
- 6. CHIPS OUTSIDE OF CLEAR APERTURE: <0.5
- 7. CLEAR APERTURE AND COATING APERTURE ARE CENTERED ON SURFACES



**FOR INFORMATION ONLY:  
DO NOT MANUFACTURE  
PARTS TO THIS DRAWING**

REV. A	S1 & S2
SHAPE	PLANO
POWER (DIOPTERS)	1.74
ANGLE TOL. (ARCSEC)	15
SURFACE QUALITY	20-10
SURFACE FLATNESS	$\lambda/10$
WAVELENGTH RANGE (nm)	200 - 2200
CLEAR APERTURE	$\varnothing 22.50$
IMAGE ORIENTATION	BEAM DEVIATION
BEVEL	PROTECTIVE AS NEEDED

SPECIFICATIONS SUBJECT TO CHANGE WITHOUT NOTICE  
DIMENSIONS ARE FOR REFERENCE ONLY

**Edmund Optics®**



ALL DIMS IN

mm

TITLE

1.0° NOM. FUSED SILICA WEDGE PRISM  
UNCOATED

DWG NO

84860

SHEET  
1 OF 1